



UOP N.V. Noorderlaan 147, B-2030 Antwerp, Belgium

**AUTOMATIC BUTTERFLY VALVE****PROJECT SPECIFICATION**

Number

E-H6279-241

Rev.

3

Sheet : 3 of 15

By : F. Heyman

R  
E  
V

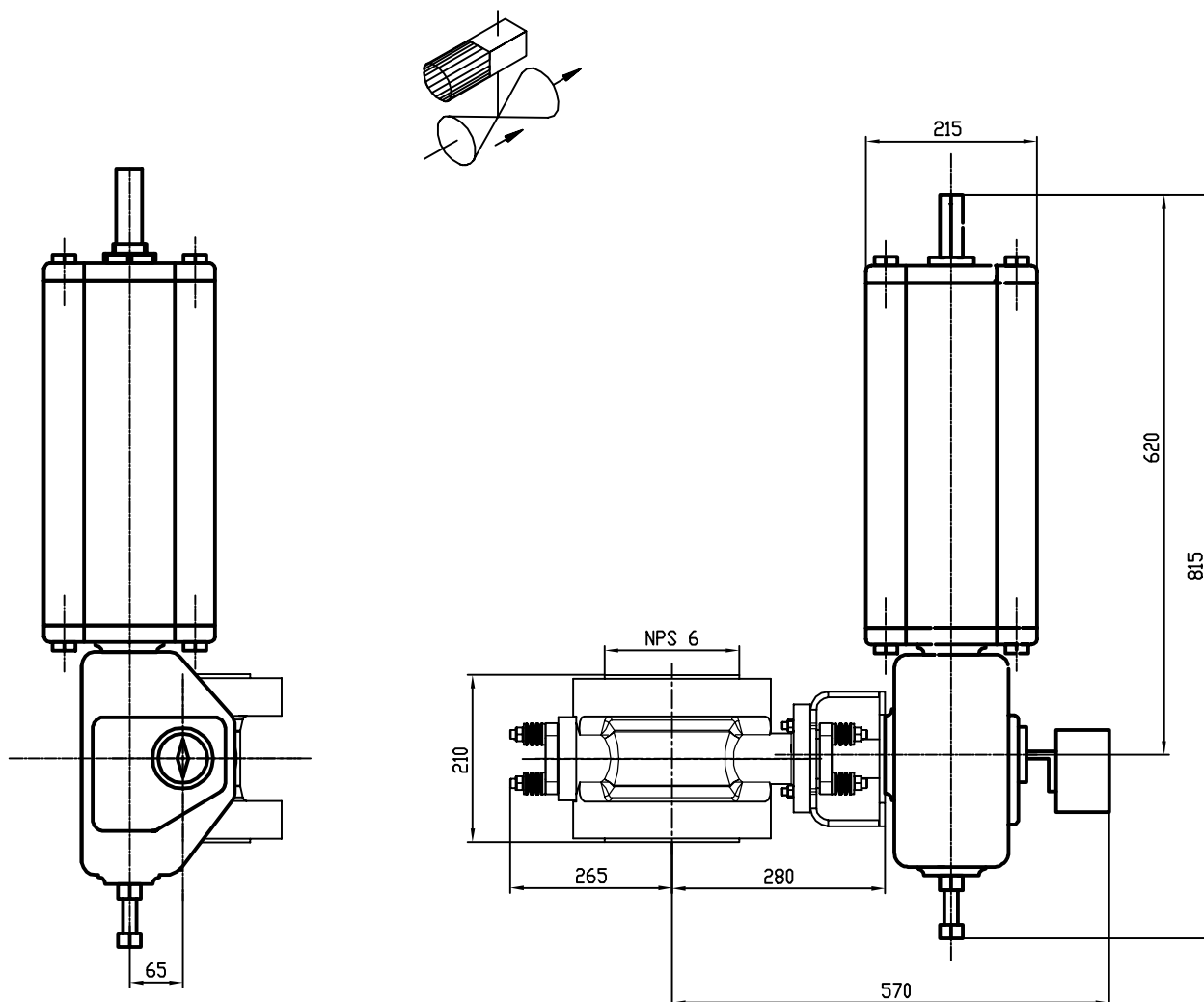
1	TAG NO.	U-XCV55011, 55021, 55031, 55041, 55051, 55061
2		U-XCV55071, 55081, 55091, 55101, 55111, 55121
3	QUANTITY	12
4	SERVICE	FEED / REPRESSURISATION
5	MEDIUM   COMPOSITION   MOLECULAR WEIGHT	FEED GAS / H <sub>2</sub> , CO, CH <sub>4</sub> , CO <sub>2</sub> , H <sub>2</sub> O / 12,03
6	AMBIENT TEMPERATURE MIN. / MAX.	- 46 / + 36 °C ACTUATOR POSITIONER LIMIT SW (note 1)
7	MINIMUM DESIGN METAL TEMPERATURE	-34 °C FOR VALVE BODY AND SEALS
8	OPERATING TEMPERATURE MIN. / MAX.	38,0 / 38,0 °C
9	OPERATING FLOW COND. 1 / 2 / 3	4989 / 16630 / 27738 Nm <sup>3</sup> /h
10	PRESSURE UPSTREAM COND. 1 / 2 / 3	19.8 / 19.8 / 19.8 kg/cm <sup>2</sup> g
11	DP COND. 1 / 2 / 3	5,02 / 5,02 / 0,053 kg/cm <sup>2</sup>
12	DP IN CLOSED POSITION	20,0 kg/cm <sup>2</sup>
13	REQUIRED C <sub>v</sub> COND. 1 / 2 / 3	15,4 / 51,4 / 730
14	VALVE BODY SIZE   RATING   STYLE	DN 150 / 300 lbs / DOUBLE FLANGED
15	SELECTED C <sub>v</sub>   CHARACTERISTIC	920 / EQUAL PERCENTAGE
16	BODY MATERIAL	ASTM 352 LCB (-34°C)
17	FLANGE RATING   FLANGE FACE FINISH	300 lbs / SMOOTH FINISH 3.2 - 6.3 µmRA
18	FACE TO FACE STD.   FACE TO FACE LENGTH	LARGE FEMALE FACE ANSI B16.5a / 210MM
19	VALVE SERVICE STANDARD	PSA HIGH CYCLING DUTY
20	VALVE CYCLIC SERVICE UNI / BI-DIRECTIONAL	UNIDIRECTIONAL
21	VALVE INITIAL CONTROL POSITION	0 - 25%
22	SHAFT POSITION FLOW DOWN / UPSTREAM	FLOW SHAFT DOWNSTREAM
23	BEARINGS AND EXCLUDER RING MATERIAL	FOR HIGH CYCLE BUTTERFLY VALVE
24	SHAFT PACKING TYPE   MATERIAL	LIFE LOADED / PTFE
25	DISC   PINS   SHAFT MATERIAL	ASTM A487 CA 6 NM / MFR STD / ASME 420
26	SEAT TYPE   MATERIAL	SOFT SEAT / FKM (VITON)
27	LEAKAGE RATE (CLASS TO B16.104)	CLASS VI BUBBLE TIGHT
28	ACTUATOR TYPE / MOUNTING POSITION	PISTON, SPRING RETURN / C-HU
29	ACTUATOR SIZE / AIR CONNECTION SIZE	B1JU12/55C / 1/2" NPT
30	AIR SUPPLY PRESSURE MIN. / NORM. / MAX.	3,5 / 4,5 / 6,0 kg/cm <sup>2</sup> g
31	SPRING TYPE / ACTION	SINGLE SPRING / SPRING TO CLOSE
32	NUMBER OF CYCLES PER YEAR	+ / - 100000
33	VALVE DUTY ON/OFF or CONTROL	HIGH CYCLE DUTY / CONTROL
34	VALVE POSITIONER MODEL	Metso, Smart ND9103HX7TY SMART ELECTRO / PNEUMATIC
35	POSITIONER TYPE	
36	CALIBRATED RANGE	
37	AIR SUPPLY PRESSURE / AIR CONNECTION	4,5 kg/cm <sup>2</sup> g / NPTF
38	AIR FILTER / REGULATOR	NOT REQUIRED
39	BOOSTER	YES MOORE 61H 1/4" NPT
40	VALVE POSITION TRANSMITTER	0-100 % INCORPORATED IN POSITIONER EEx ia IIC T6
41	TRAVEL STOP	STANDARD
42	TUBING & FITTING MATERIAL / SIZE	FOR TUBE AND FITTINGS REFER TO E-H6279-241T Metso Automation BN3DY06YT-L-B1JU12/55CL-Instr.
43	VALVE SUPPLIER	
44	VALVE TYPE NO.	
45	REMARKS : В комплект поставки должен входить комплект	
46	крепежа (прокладки, шпильки, гайки).	
47		

This information is proprietary and shall not be disclosed outside your organisation, nor shall it be duplicated, used, or disclosed for any purpose other than as permitted under written agreement with UOP.

  
C.B. Лохматов

Dimensions are maximum values ( given in millimeters). Weight is approximate value (given in kgs).

MOUNTING POSITION: C-HU



BUTTERFLY VALVE SIZE 150 (6")  
 RATING: ASME B16.5 class 300  
 FLANGE DRILLING TO ASME B16.5 class 300  
 FACING: ASME B16.5 Large Female

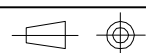
ACTUATOR  
 TYPE: B1JU12/55CL

ACCESSORIES  
 – POSITIONER ND9103HX7TY  
 – BOOSTER MOORE 61H 1/4" NPT  
 – SILENCER SV 1/2" NPT

PIPING AND FITTINGS: mm, AISI 316L / AISI 316 Swagelok  
 TOTAL WEIGHT: 125 kg

TAG. NO: U-XCV55011, 55021, 55031, 55041, 55051, 55061  
 U-XCV55071, 55081, 55091, 55101, 55111, 55121

0	08.04.15	AF
REV.	DATE	DRW



Metso Automation

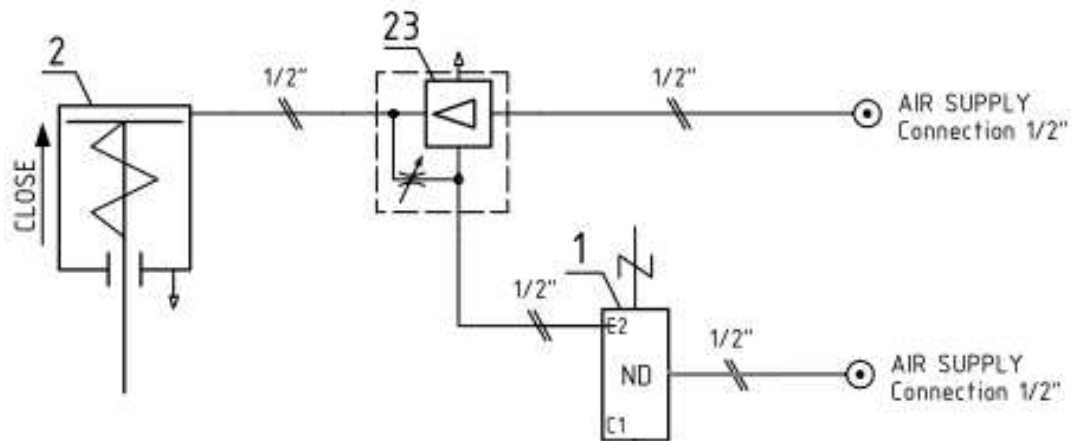
CERTIFIED DIMENSIONAL DRAWING

DIM 0001327684\_001

BN3DY06YT-L-B1JU12/55CL-Instr.

ELECTRIC CONDUIT ENTRIES			
DEVICE	CONDUIT ENTRY	Qty.	CABLE GLAND, Qty.
POSITIONER	M20x1.5	1	No



STROKING TIME	Min.	/	Max.
OPENING TIME sec.	-	/	-
CLOSING TIME sec.	-	/	-
AIR FAILURE	CLOSE		
ELECTRIC FAILURE	CLOSE		



1. VALVE CONTROLLER METSO ND9103HX7TY
2. PNEUMATIC ACTUATOR METSO B1JU12/55CL
23. VOLUME BOOSTER MOORE 61H 1/4NPT

Tubing: inch, AISI316L  
 Fittings: Swagelok, AISI316

CUSTOMER ORDER: OAO Slavneft-JANOS/SLAVNEFT OAO  
 SALES UNIT REF. : 0070300467\_05

	INSTRUMENTATION DRAWING		PVM DATE 07.04.15	PIIRT. DWN FK	TARK. CHECK. AW	HYV. APPR. FK
	Metso Automation		HELSINKI FINLAND		ENT. OLD NO.	UUSI NEW NO.
TAG-No.: U-XCV55011, 55021, 55031, 55041, 55051, 55061 U-XCV55071, 55081, 55091, 55101, 55111, 55121				D	INS0001327684_001	
				MICROFILM.		
				MUUTOS ISSUE		

**UOP**

UOP N.V. Noorderlaan 147, B-2030 Antwerp, Belgium

**PROJECT SPECIFICATION**

Number

E-H6279-241

Rev.

3

Sheet : 4 of 15

By : F. Heyman

**AUTOMATIC BUTTERFLY VALVE**

1	TAG NO.	U-XV55012, 55022, 55032, 55042, 55052, 55062
2		U-XV55072, 55082, 55092, 55102, 55112, 55122
3	QUANTITY	12
4	SERVICE	PRODUCT
5	MEDIUM   COMPOSITION   MOLECULAR WEIGHT	HYDROGEN / H <sub>2</sub> / 2,02
6	AMBIENT TEMPERATURE MIN. / MAX.	- 46 / + 36 °C ACTUATOR POSITIONER LIMIT SW ( note 1)
7	MINIMUM DESIGN METAL TEMPERATURE	-34 °C FOR VALVE BODY AND SEALS
8	OPERATING TEMPERATURE MIN. / MAX.	43,0 / 43,0 °C
9	OPERATING FLOW COND. 1 / 2 / 3	15105 / xxxx / 22400 Nm <sup>3</sup> /h
10	PRESSURE UPSTREAM COND. 1 / 2 / 3	19,1 / xxx / 19,1 kg/cm <sup>2</sup> g
11	DP COND. 1 / 2 / 3	0,056 / xxx / 0,121 kg/cm <sup>2</sup>
12	DP IN CLOSED POSITION	20,0 kg/cm <sup>2</sup>
13	REQUIRED C <sub>v</sub> COND. 1 / 2 / 3	162 / xxx / 162
14	VALVE BODY SIZE   RATING   STYLE	DN 80 / 300 lbs / DOUBLE FLANGED
15	SELECTED C <sub>v</sub>   CHARACTERISTIC	180 / ON-OFF
16	BODY MATERIAL	ASTM 352 LCB ( -34°C)
17	FLANGE RATING   FLANGE FACE FINISH	300 lbs / SMOOTH FINISH 3,2 - 6,3 µmRA
18	FACE TO FACE STD.   FACE TO FACE LENGTH	LARGE FEMALE FACE ANSI B16.5a / 180MM
19	VALVE SERVICE STANDARD	PSA HIGH CYCLING DUTY
20	VALVE CYCLIC SERVICE UNI / BI-DIRECTIONAL	UNIDIRECTIONAL
21	VALVE INITIAL CONTROL POSITION	
22	SHAFT POSITION FLOW DOWN / UPSTREAM	FLOW SHAFT DOWNSTREAM
23	BEARINGS AND EXCLUDER RING MATERIAL	FOR HIGH CYCLE BUTTERFLY VALVE
24	SHAFT PACKING TYPE   MATERIAL	LIFE LOADED / PTFE
25	DISC   PINS   SHAFT MATERIAL	ASTM A487 CA 6 NM / MFR STD / ASME 420
26	SEAT TYPE   MATERIAL	SOFT SEAT / FKM (VITON)
27	LEAKAGE RATE (CLASS TO B16.104)	CLASS VI BUBBLE TIGHT
28	ACTUATOR TYPE / MOUNTING POSITION	PISTON, SPRING RETURN / A-HU
29	ACTUATOR SIZE / AIR CONNECTION SIZE	B1JU10/40C / 3/8" NPT
30	AIR SUPPLY PRESSURE MIN. / NORM. / MAX.	3,5 / 4,5 / 6,0 kg/cm <sup>2</sup> g
31	SPRING TYPE / ACTION	SINGLE SPRING / SPRING TO CLOSE
32	NUMBER OF CYCLES PER YEAR	+ / - 100000
33	VALVE DUTY ON/OFF or CONTROL	HIGH CYCLE DUTY / ON-OFF
34	VALVE POSITIONER MODEL	NOT REQUIRED
35	POSITIONER TYPE	
36	CALIBRATED RANGE	
37	AIR SUPPLY PRESSURE / AIR CONNECTION	4,5 kg/cm <sup>2</sup> g / NPTF
38	AIR FILTER / REGULATOR	NOT REQUIRED
39	SOLENOID	SOLENOID INSTALLED BY OTHERS
40	PROXIMITY SWITCH / POSITION	QN44KO5HDM , EEx ia IIC T6 / CLOSED
41	TRAVEL STOP	STANDARD
42	TUBING & FITTING MATERIAL / SIZE	NOT REQUIRED
43	VALVE SUPPLIER	Metso Automation
44	VALVE TYPE NO.	BN3DY03YT-L-B1JU10/40CL-Instr.
45	REMARKS :	
46		В комплект поставки должен входить комплект
47		крепёжа (прокладки, шпильки, гайки).

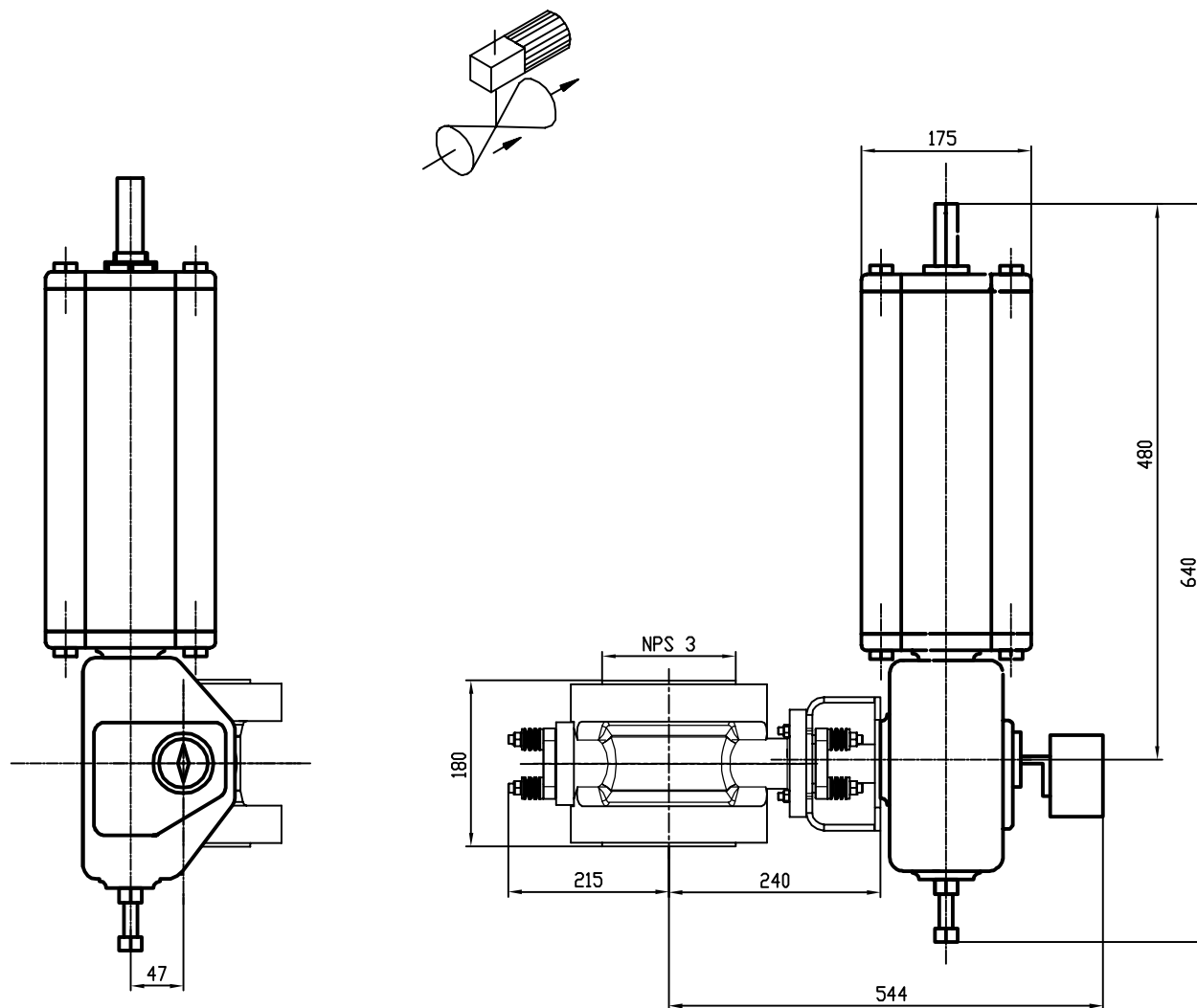
This information is proprietary and shall not be disclosed outside your organisation, nor shall it be duplicated, used, or disclosed for any purpose other than as permitted under written agreement with UOP.



C.B. Лохматов

Dimensions are maximum values ( given in millimeters). Weight is approximate value (given in kgs).

MOUNTING POSITION: A-HU



BUTTERFLY VALVE SIZE 80 (3")  
 RATING: ASME B16.5 class 300  
 FLANGE DRILLING TO ASME B16.5 class 300  
 FACING: ASME B16.5 Large Female

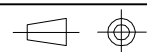
ACTUATOR  
 TYPE: B1JU10/40CL

ACCESSORIES  
 – LIMIT SWITCH QN44KO5HDM

PIPING AND FITTINGS: mm, AISI 316L / AISI 316 Swagelok  
 TOTAL WEIGHT: 70 kg

TAG. NO: U-XV55012, 55022, 55032, 55042, 55052, 55062  
 U-XV55072, 55082, 55092, 55102, 55112, 55122

0	08.04.15	AF
REV.	DATE	DRW



Metso Automation

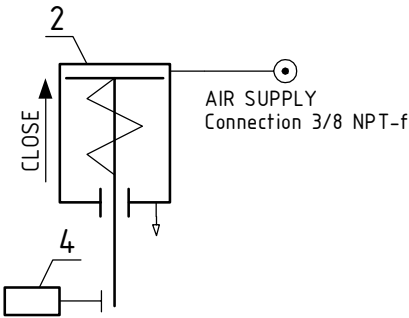
CERTIFIED DIMENSIONAL DRAWING

DIM 0001327684\_003

BN3DY03YT-L-B1JU10/40CL-Instr.

ELECTRIC CONDUIT ENTRIES			
DEVICE	CONDUIT ENTRY	Qty.	CABLE GLAND, Qty.
LIMITSWITCH	M20x1.5	2	Yes 2



STROKING TIME	Min.	/	Max.
OPENING TIME sec.	-	/	-
CLOSING TIME sec.	-	/	-
AIR FAILURE	CLOSE		
ELECTRIC FAILURE	-		



- 2. PNEUMATIC ACTUATOR METSO B1JU10/40CL
- 4. LIMIT SWITCH METSO QN44KO5HDM

Tubing: inch, AISI316L  
 Fittings: Swagelok, AISI316

CUSTOMER ORDER: OAO Slavneft-JANOS/SLAVNEFT OAO  
 SALES UNIT REF. : 0070300467\_05

	INSTRUMENTATION DRAWING		PVM DATE 07.04.15	PIIRT. DWN FK	TARK. CHECK. AW	HYV. APPR. FK
	Metso Automation		HELSINKI FINLAND		ENT. OLD NO.	UUSI NEW NO.
TAG-No.: U-XV55012, 55022, 55032, 55042, 55052, 55062 U-XV55072, 55082, 55092, 55102, 55112, 55122				D	INS0001327684_003	
				MICROFILM.		
				MUUTOS ISSUE		

**UOP**

UOP N.V. Noorderlaan 147, B-2030 Antwerp, Belgium

**AUTOMATIC BUTTERFLY VALVE****PROJECT SPECIFICATION**

Number

E-H6279-241

Rev.

3

Sheet : 5 of 15

By : F. Heyman

R  
E  
V

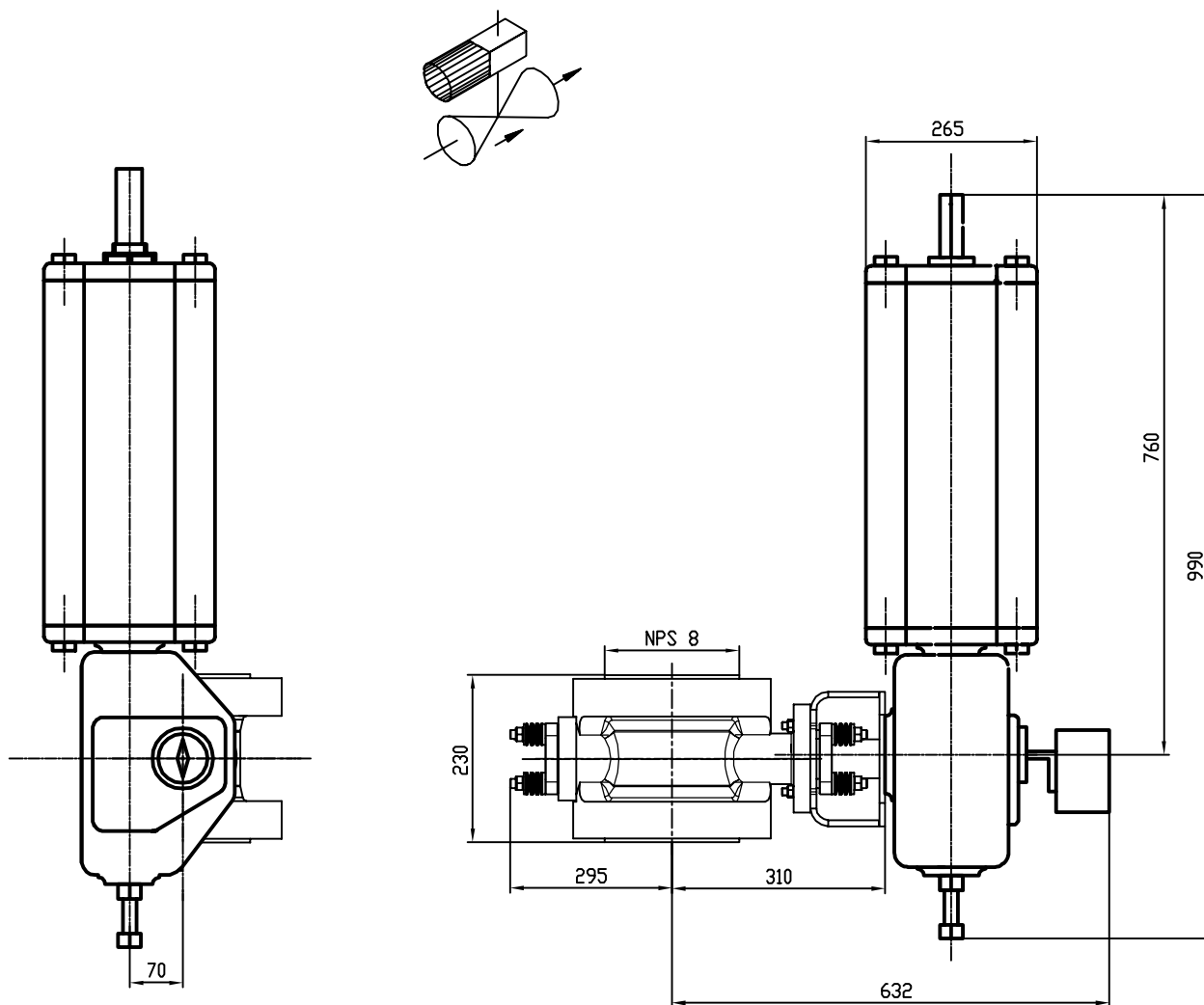
1	TAG NO.	U-XCV55014, 55024, 55034, 55044, 55054, 55064
2		U-XCV55074, 55084, 55094, 55104, 55114, 55124
3	QUANTITY	12
4	SERVICE	DUMP / PURGE
5	MEDIUM   COMPOSITION   MOLECULAR WEIGHT	OFF GAS / H <sub>2</sub> , CO, CH <sub>4</sub> , CO <sub>2</sub> , H <sub>2</sub> O / 28,75
6	AMBIENT TEMPERATURE MIN. / MAX.	- 46 / + 36 °C ACTUATOR POSITIONER LIMIT SW ( note 1)
7	MINIMUM DESIGN METAL TEMPERATURE	-34 °C FOR VALVE BODY AND SEALS
8	OPERATING TEMPERATURE MIN. / MAX.	28,0 / 28,0 °C
9	OPERATING FLOW COND. 1 / 2 / 3	2418 / 4610 / 8060 Nm <sup>3</sup> /h
10	PRESSURE UPSTREAM COND. 1 / 2 / 3	1,95 / 0,50 / 1,95 kg/cm <sup>2</sup> g
11	DP COND. 1 / 2 / 3	1,6 / 0,008 / 1,6 kg/cm <sup>2</sup>
12	DP IN CLOSED POSITION	20,0 kg/cm <sup>2</sup>
13	REQUIRED C <sub>v</sub> COND. 1 / 2 / 3	66,1 / 1819 / 221,7
14	VALVE BODY SIZE   RATING   STYLE	DN 200 / 300 lbs / DOUBLE FLANGED
15	SELECTED C <sub>v</sub>   CHARACTERISTIC	1920 / EQUAL PERCENTAGE
16	BODY MATERIAL	ASTM 352 LCB (-34°C)
17	FLANGE RATING   FLANGE FACE FINISH	300 lbs / SMOOTH FINISH 3.2 - 6.3 µmRA
18	FACE TO FACE STD.   FACE TO FACE LENGTH	LARGE FEMALE FACE ANSI B16.5a / 230MM
19	VALVE SERVICE STANDARD	PSA HIGH CYCLING DUTY
20	VALVE CYCLIC SERVICE UNI / BI-DIRECTIONAL	UNIDIRECTIONAL
21	VALVE INITIAL CONTROL POSITION	0 - 25%
22	SHAFT POSITION FLOW DOWN / UPSTREAM	FLOW SHAFT DOWNSTREAM
23	BEARINGS AND EXCLUDER RING MATERIAL	FOR HIGH CYCLE BUTTERFLY VALVE
24	SHAFT PACKING TYPE   MATERIAL	LIFE LOADED GLANDPACKING / PTFE
25	DISC   PINS   SHAFT MATERIAL	ASTM A487 CA 6 NM / MFR STD / ASME 420
26	SEAT TYPE   MATERIAL	SOFT SEAT / FKM (VITON)
27	LEAKAGE RATE (CLASS TO B16.104)	CLASS VI BUBBLE TIGHT
28	ACTUATOR TYPE / MOUNTING POSITION	PISTON, SPRING RETURN / C-HU
29	ACTUATOR SIZE / AIR CONNECTION SIZE	B1JU16/55C / 1/2" NPT
30	AIR SUPPLY PRESSURE MIN. / NORM. / MAX.	3,5 / 4,5 / 6,0 kg/cm <sup>2</sup> g
31	SPRING TYPE / ACTION	SINGLE SPRING / SPRING TO CLOSE
32	NUMBER OF CYCLES PER YEAR	+ / - 100000
33	VALVE DUTY ON/OFF or CONTROL	HIGH CYCLE DUTY / CONTROL
34	VALVE POSITIONER MODEL	Metso, Smart ND9103HX7TY
35	POSITIONER TYPE	SMART ELECTRO / PNEUMATIC
36	CALIBRATED RANGE	4 - 20 mA
37	AIR SUPPLY PRESSURE / AIR CONNECTION	4,5 kg/cm <sup>2</sup> g / NPTF
38	AIR FILTER / REGULATOR	NOT REQUIRED
39	BOOSTER	Yes, VALTEK 76407-999, 3/4"NPT
40	VALVE POSITION TRANSMITTER	0-100 % INCORPORATED IN POSITIONER EEx ia IIC T6
41	TRAVEL STOP	STANDARD
42	TUBING & FITTING MATERIAL / SIZE	FOR TUBE AND FITTINGS REFER TO E-H6279-241T
43	VALVE SUPPLIER	Metso Automation
44	VALVE TYPE NO.	BN3DY08YT-L-B1JU16/55CL-Instr.
45	REMARKS :	
46		В комплект поставки должен входить комплект
47		крепёжа (прокладки, шпильки, гайки).

This information is proprietary and shall not be disclosed outside your organisation, nor shall it be duplicated, used, or disclosed for any purpose other than as permitted under written agreement with UOP.

  
C.B. HOXMATOV

Dimensions are maximum values ( given in millimeters). Weight is approximate value (given in kgs).

MOUNTING POSITION: C-HU



BUTTERFLY VALVE SIZE 200 (8")  
 RATING: ASME B16.5 class 300  
 FLANGE DRILLING TO ASME B16.5 class 300  
 FACING: ASME B16.5 Large Female

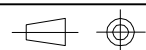
ACTUATOR  
 TYPE: B1JU16/55CL

ACCESSORIES  
 – POSITIONER ND9103HX7TY  
 – BOOSTER VALTEK 76407-999, 3/4" NPT  
 – SILENCER SV 1/2" NPT

PIPING AND FITTINGS: mm, AISI 316L / AISI 316 Swagelok  
 TOTAL WEIGHT: 200 kg

TAG. NO: U-XCV55014, 55024, 55034, 55044, 55054, 55064  
 U-XCV55074, 55084, 55094, 55104, 55114, 55124

0	08.04.15	AF
REV.	DATE	DRW



Metso Automation

CERTIFIED DIMENSIONAL DRAWING

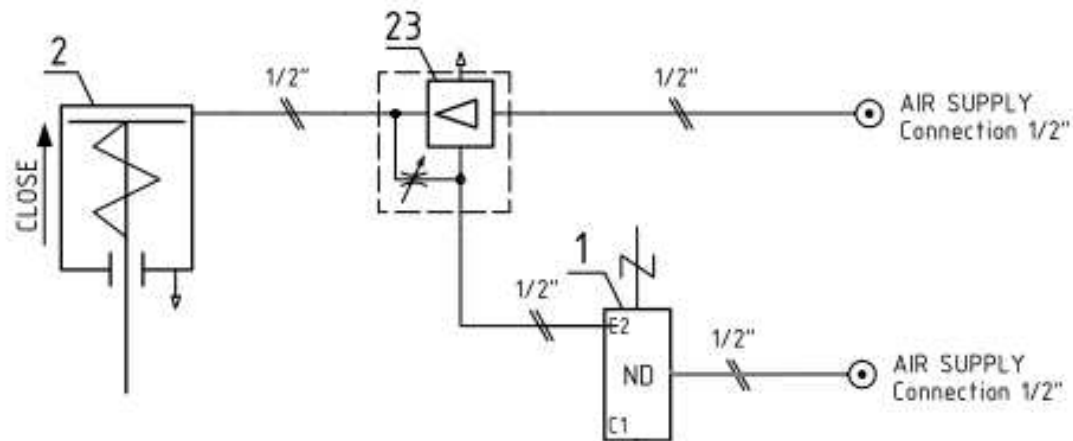
DIM 0001327684\_002

BN3DY08YT-L-B1JU16/55CL-Instr.



ELECTRIC CONDUIT ENTRIES			
DEVICE	CONDUIT ENTRY	Qty.	CABLE GLAND, Qty.
POSITIONER	M20x1.5	1	No



STROKING TIME	Min.	/	Max.
OPENING TIME sec.	-	/	-
CLOSING TIME sec.	-	/	-
AIR FAILURE	CLOSE		
ELECTRIC FAILURE	CLOSE		



1. VALVE CONTROLLER METSO ND9103HX7TY
2. PNEUMATIC ACTUATOR METSO B1JU16/55CL
23. VOLUME BOOSTER VALTEK 76407-999

Tubing: inch, AISI316L  
 Fittings: Swagelok, AISI316

CUSTOMER ORDER: OAO Slavneft-JANOS/SLAVNEFT OAO  
 SALES UNIT REF. : 0070300467\_05

	INSTRUMENTATION DRAWING		PVM DATE 07.04.15	PIIRT. DWN FK	TARK. CHECK. AW	HYV. APPR. FK
	Metso Automation		HELSINKI FINLAND		ENT. OLD NO.	UUSI NEW NO.
TAG-No. U-XCV55014, 55024, 55034, 55044, 55054, 55064 U-XCV55074, 55084, 55094, 55104, 55114, 55124				D	INS0001327684_002	
				MICROFILM.		
				MUUTOS ISSUE		

**UOP**

UOP N.V. Noorderlaan 147, B-2030 Antwerp, Belgium

**AUTOMATIC BUTTERFLY VALVE****PROJECT SPECIFICATION**

Number

E-H6279-241

Rev.

3

Sheet : 6 of 15

By : F. Heyman

R  
E  
V

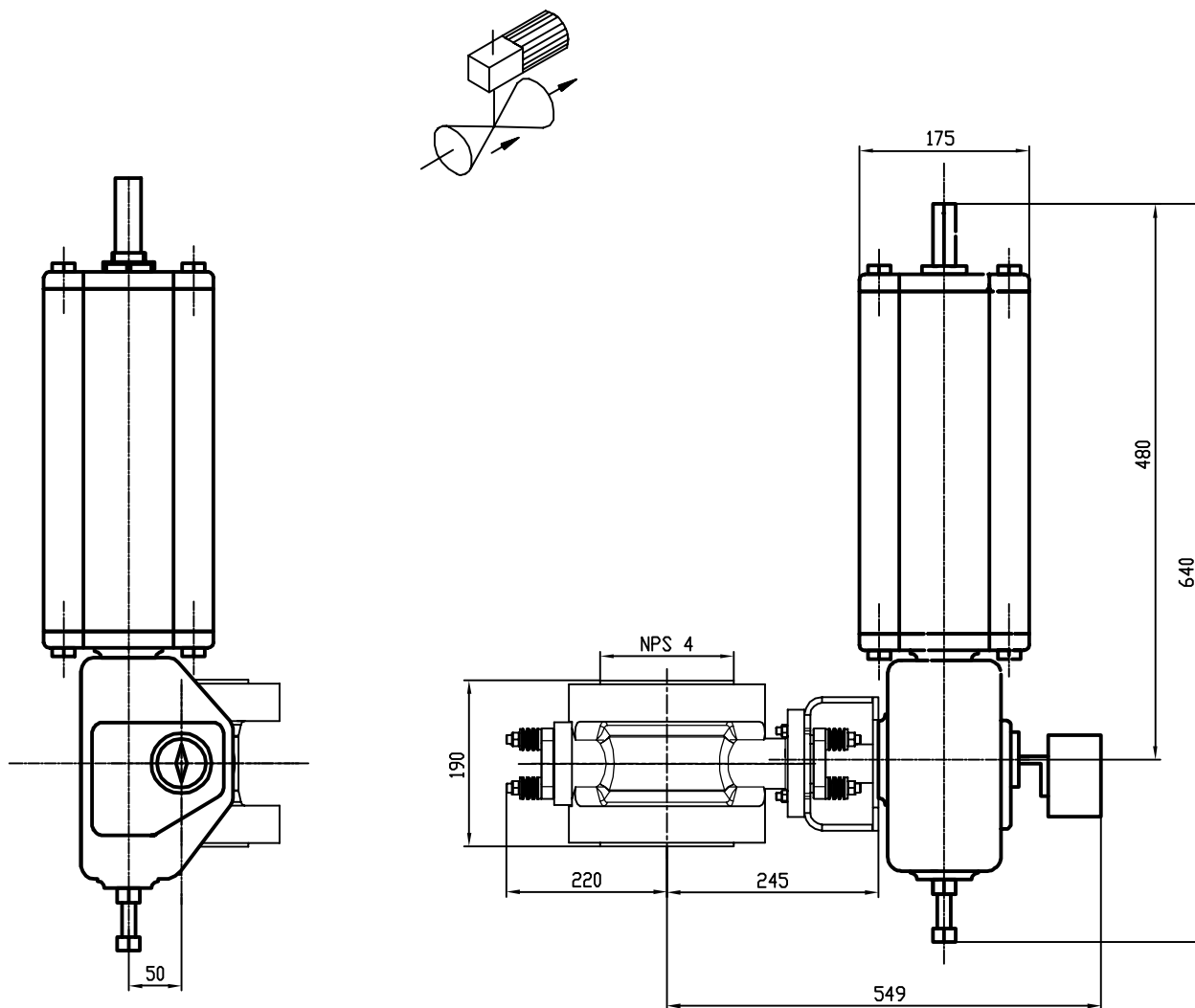
1	TAG NO.	U-XV55015, 55025, 55035, 55045, 55055, 55065
2		U-XV55075, 55085, 55095, 55105, 55115, 55125
3	QUANTITY	12
4	SERVICE	EQUALISATION 1 & 2
5	MEDIUM   COMPOSITION   MOLECULAR WEIGHT	HYDROGEN / H <sub>2</sub> / 2,02
6	AMBIENT TEMPERATURE MIN. / MAX.	- 46 / + 36 °C ACTUATOR POSITIONER LIMIT SW ( note 1)
7	MINIMUM DESIGN METAL TEMPERATURE	-34 °C FOR VALVE BODY AND SEALS
8	OPERATING TEMPERATURE MIN. / MAX.	43,0 / 43,0 °C
9	OPERATING FLOW COND. 1 / 2 / 3	43920 / xxx / 53980 Nm <sup>3</sup> /h
10	PRESSURE UPSTREAM COND. 1 / 2 / 3	10,55 / xxx / 14,82 kg/cm <sup>2</sup> g
11	DP COND. 1 / 2 / 3	0,35 / xxx / 0,38 kg/cm <sup>2</sup>
12	DP IN CLOSED POSITION	20,0 kg/cm <sup>2</sup>
13	REQUIRED C <sub>v</sub> COND. 1 / 2 / 3	272 / xxx / 272
14	VALVE BODY SIZE   RATING   STYLE	DN 100 / 300 lbs / DOUBLE FLANGED
15	SELECTED CV   CHARACTERISTIC	400 / ON - OFF
16	BODY MATERIAL	ASTM 352 LCB (-34°C)
17	FLANGE RATING   FLANGE FACE FINISH	300 lbs / SMOOTH FINISH 3,2 - 6,3 µmRA
18	FACE TO FACE STD.   FACE TO FACE LENGTH	LARGE FEMALE FACE ANSI B16.5a / 190MM
19	VALVE SERVICE STANDARD	PSA HIGH CYCLING DUTY
20	VALVE CYCLIC SERVICE UNI / BI-DIRECTIONAL	BI-DIRECTIONAL
21	VALVE INITIAL CONTROL POSITION	
22	SHAFT POSITION FLOW DOWN / UPSTREAM	FLOW SHAFT DOWNSTREAM
23	BEARINGS AND EXCLUDER RING MATERIAL	HIGH CYCLE UPGRADE KIT
24	SHAFT PACKING TYPE   MATERIAL	LIFE LOADED / PTFE
25	DISC   PINS   SHAFT MATERIAL	ASTM A487 CA 6 NM / MFR STD / ASME 420
26	SEAT TYPE   MATERIAL	SOFT SEAT / FKM (VITON)
27	LEAKAGE RATE (CLASS TO B16.104)	CLASS VI BUBBLE TIGHT
28	ACTUATOR TYPE / MOUNTING POSITION	PISTON, SPRING RETURN / A-HU
29	ACTUATOR SIZE / AIR CONNECTION SIZE	B1JU10/40C / 3/8" NPT
30	AIR SUPPLY PRESSURE MIN. / NORM. / MAX.	3,5 / 4,5 / 6,0 kg/cm <sup>2</sup> g
31	SPRING TYPE / ACTION	SINGLE SPRING / SPRING TO CLOSE
32	NUMBER OF CYCLES PER YEAR	+/- 400000
33	VALVE DUTY ON/OFF or CONTROL	HIGH CYCLE DUTY / ON/OFF
34	VALVE POSITIONER MODEL	NOT REQUIRED
35	POSITIONER TYPE	
36	CALIBRATED RANGE	
37	AIR SUPPLY PRESSURE / AIR CONNECTION	4,5 kg/cm <sup>2</sup> g / NPTF
38	AIR FILTER / REGULATOR	NOT REQUIRED
39	SOLENOID	SOLENOID INSTALLED BY OTHERS
40	PROXIMITY SWITCH / POSITION	QN44KO5HDM, EEx ia IIC T6 / CLOSED
41	TRAVEL STOP	STANDARD
42	TUBING & FITTING MATERIAL / SIZE	NOT REQUIRED
43	VALVE SUPPLIER	Metso Automation
44	VALVE TYPE NO.	BN3DY04YT-L-B1JU10/40CL-Instr.
45	REMARKS	В комплект поставки должен входить комплект
46		крепежа (прокладки, шпильки, гайки).
47		

This information is proprietary and shall not be disclosed outside your organisation, nor shall it be duplicated, used, or disclosed for any purpose other than as permitted under written agreement with UOP.

C.B. Лохматов

Dimensions are maximum values ( given in millimeters). Weight is approximate value (given in kgs).

MOUNTING POSITION: A-HU



BUTTERFLY VALVE SIZE 100 (4")  
 RATING: ASME B16.5 class 300  
 FLANGE DRILLING TO ASME B16.5 class 300  
 FACING: ASME B16.5 Large Female

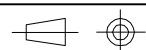
ACTUATOR  
 TYPE: B1JU10/40CL

ACCESSORIES  
 – LIMIT SWITCH QN44KO5HDM

PIPING AND FITTINGS: mm, AISI 316L / AISI 316 Swagelok  
 TOTAL WEIGHT: 72 kg

TAG. NO: U-XV55015, 55025, 55035, 55045, 55055, 55065  
 U-XV55075, 55085, 55095, 55105, 55115, 55125

0	08.04.15	AF
REV.	DATE	DRW



Metso Automation

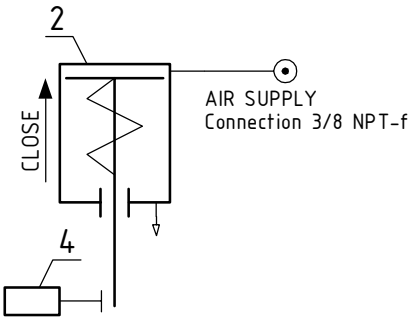
CERTIFIED DIMENSIONAL DRAWING

DIM 0001327684\_004

BN3DY04YT-L-B1JU10/40CL-Instr.

ELECTRIC CONDUIT ENTRIES			
DEVICE	CONDUIT ENTRY	Qty.	CABLE GLAND, Qty.
LIMITSWITCH	M20x1.5	2	Yes 2


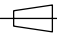
STROKING TIME	Min.	/	Max.
OPENING TIME sec.	-	/	-
CLOSING TIME sec.	-	/	-
AIR FAILURE	CLOSE		
ELECTRIC FAILURE	-		



- 2. PNEUMATIC ACTUATOR METSO B1JU10/40CL
- 4. LIMIT SWITCH METSO QN44KO5HDM

Tubing: inch, AISI316L  
 Fittings: Swagelok, AISI316

CUSTOMER ORDER: OAO Slavneft-JANOS/SLAVNEFT OAO  
 SALES UNIT REF. : 0070300467\_05

	INSTRUMENTATION DRAWING	PVM DATE 07.04.15	PIIRT. DWN FK	TARK. CHECK. AW	HYV. APPR. FK
	Metso Automation	HELSINKI FINLAND		ENT. OLD NO.	UUSI NEW NO.
TAG-No.: U-XV55015, 55025, 55035, 55045, 55055, 55065 U-XV55075, 55085, 55095, 55105, 55115, 55125			<div>D</div> <div>INS0001327684_004</div>		
			<div>MICROFILM.</div> <div>MUUTOS ISSUE</div>		



UOP N.V. Noorderlaan 147, B-2030 Antwerp, Belgium

**AUTOMATIC BUTTERFLY VALVE****PROJECT SPECIFICATION**

Number

Rev.

E-H6279-241

3

Sheet : 7 of 15

By : F. Heyman

REV

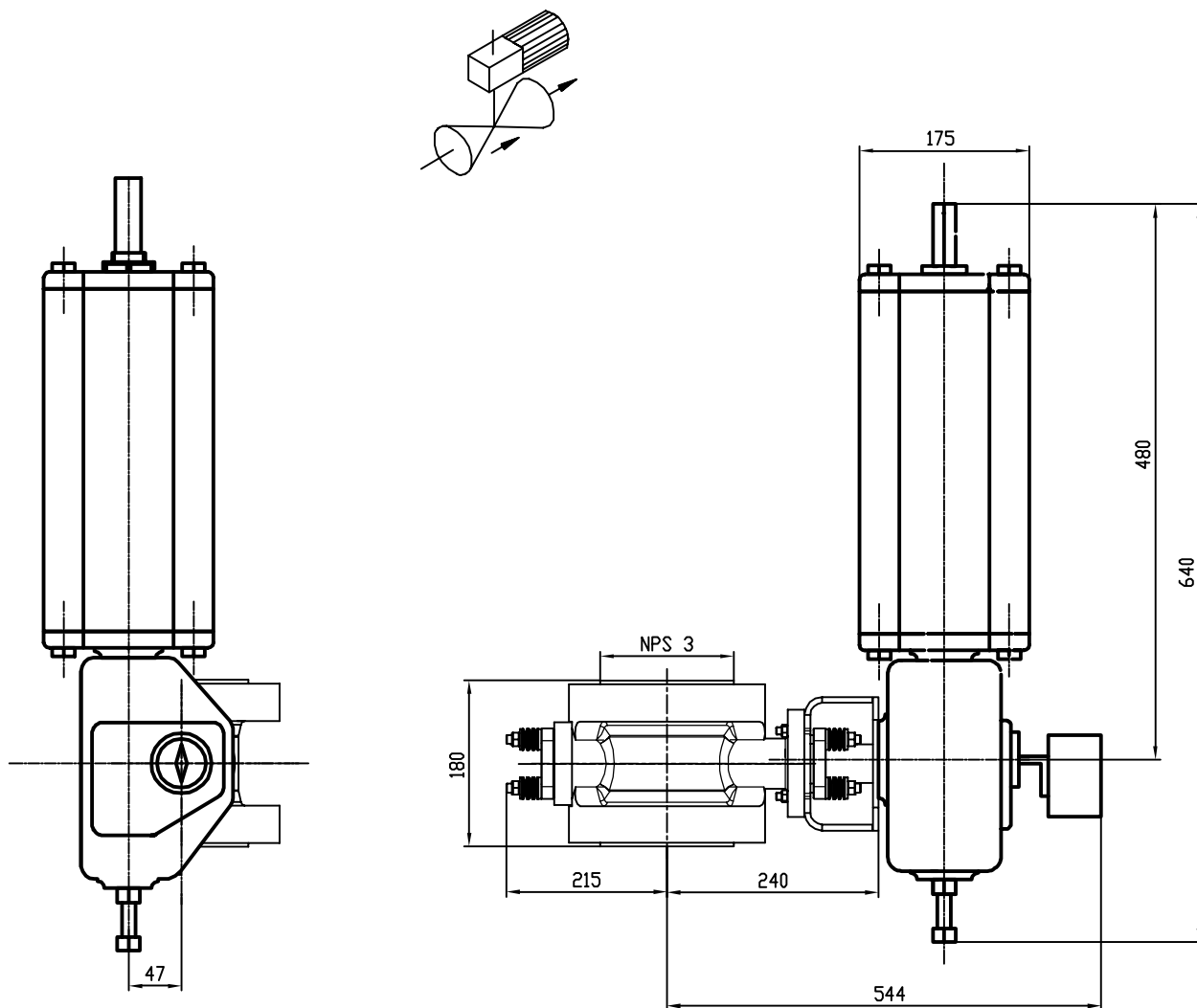
1	TAG NO.	U-XV55016, 55026, 55036, 55046, 55056, 55066
2		
3	QUANTITY	6
4	SERVICE	EQUALISATION 3
5	MEDIUM   COMPOSITION   MOLECULAR WEIGHT	HYDROGEN / H <sub>2</sub> / 2,02
6	AMBIENT TEMPERATURE MIN. / MAX.	-46 / +36 °C ACTUATOR POSITIONER LIMIT SW (note 1)
7	MINIMUM DESIGN METAL TEMPERATURE	-34 °C FOR VALVE BODY AND SEALS
8	OPERATING TEMPERATURE MIN. / MAX.	38.0 / 43.0 °C
9	OPERATING FLOW COND. 1 / 2 / 3	xxx / xxx / 21070 Nm <sup>3</sup> /h
10	PRESSURE UPSTREAM COND. 1 / 2 / 3	xxx / xxx / 6,65 kg/cm <sup>2</sup> g
11	DP COND. 1 / 2 / 3	xxx / xxx / 0,34 kg/cm <sup>2</sup>
12	DP IN CLOSED POSITION	20,0 kg/cm <sup>2</sup>
13	REQUIRED C <sub>v</sub> COND. 1 / 2 / 3	xxx / xxx / 162
14	VALVE BODY SIZE   RATING   STYLE	DN 80 / 300 lbs / DOUBLE FLANGED
15	SELECTED C <sub>v</sub>   CHARACTERISTIC	180 / ON-OFF
16	BODY MATERIAL	ASTM 352 LCB (-34°C)
17	FLANGE RATING   FLANGE FACE FINISH	300 lbs / SMOOTH FINISH 3.2 - 6.3 µmRA
18	FACE TO FACE STD.   FACE TO FACE LENGTH	LARGE FEMALE FACE ANSI B16.5a / 180MM
19	VALVE SERVICE STANDARD	PSA HIGH CYCLING DUTY
20	VALVE CYCLIC SERVICE UNI / BI-DIRECTIONAL	BI-DIRECTIONAL
21	VALVE INITIAL CONTROL POSITION	
22	SHAFT POSITION FLOW DOWN / UPSTREAM	FLOW SHAFT DOWNSTREAM
23	BEARINGS AND EXCLUDER RING MATERIAL	HIGH CYCLE UPGRADE KIT
24	SHAFT PACKING TYPE   MATERIAL	LIFE LOADED / PTFE
25	DISC   PINS   SHAFT MATERIAL	ASTM A487 CA 6 NM / MFR STD / ASME 420
26	SEAT TYPE   MATERIAL	SOFT SEAT / FKM (VITON)
27	LEAKAGE RATE (CLASS TO B16.104)	CLASS VI BUBBLE TIGHT
28	ACTUATOR TYPE / MOUNTING POSITION	PISTON, SPRING RETURN / A-HU
29	ACTUATOR SIZE / AIR CONNECTION SIZE	B1JU10/40C / 3/8" NPT
30	AIR SUPPLY PRESSURE MIN. / NORM. / MAX.	3,5 / 4,5 / 6,0 kg/cm <sup>2</sup> g
31	SPRING TYPE / ACTION	SINGLE SPRING / SPRING TO CLOSE
32	NUMBER OF CYCLES PER YEAR	+/- 200000
33	VALVE DUTY ON/OFF or CONTROL	HIGH CYCLE DUTY / ON-OFF
34	VALVE POSITIONER MODEL	NOT REQUIRED
35	POSITIONER TYPE	
36	CALIBRATED RANGE	
37	AIR SUPPLY PRESSURE / AIR CONNECTION	4,5 kg/cm <sup>2</sup> g / NPTF
38	AIR FILTER / REGULATOR	NOT REQUIRED
39	SOLENOID	SOLENOID INSTALLED BY OTHERS
40	PROXIMITY SWITCH / POSITION	QN44KO5HDM , EEx ia IIC T6 / CLOSED
41	TRAVEL STOP	STANDARD
42	TUBING & FITTING MATERIAL / SIZE	NOT REQUIRED
43	VALVE SUPPLIER	Metso Automation
44	VALVE TYPE NO.	BN3DY03YT-L-B1JU10/40CL-Instr.
45	REMARKS	В комплект поставки должен входить комплект
46		крепёжа (прокладки, шпильки, гайки).
47		

This information is proprietary and shall not be disclosed outside your organisation, nor shall it be duplicated, used, or disclosed for any purpose other than as permitted under written agreement with UOP.

C.B. Лохматов

Dimensions are maximum values ( given in millimeters). Weight is approximate value (given in kgs).

MOUNTING POSITION: A-HU



BUTTERFLY VALVE SIZE 80 (3")  
 RATING: ASME B16.5 class 300  
 FLANGE DRILLING TO ASME B16.5 class 300  
 FACING: ASME B16.5 Large Female

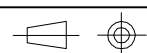
ACTUATOR  
 TYPE: B1JU10/40CL

ACCESSORIES  
 – LIMIT SWITCH QN44KO5HDM

PIPING AND FITTINGS: mm, AISI 316L / AISI 316 Swagelok  
 TOTAL WEIGHT: 70 kg

TAG. NO: U-XV55016, 55026, 55036, 55046, 55056, 55066

0	08.04.15	AF
REV.	DATE	DRW



Metso Automation

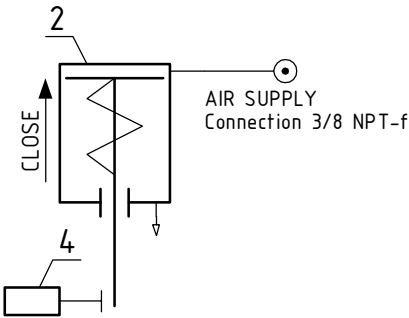
CERTIFIED DIMENSIONAL DRAWING

DIM 0001327684\_005

BN3DY03YT-L-B1JU10/40CL-Instr.

ELECTRIC CONDUIT ENTRIES			
DEVICE	CONDUIT ENTRY	Qty.	CABLE GLAND, Qty.
LIMITSWITCH	M20x1.5	2	Yes 2

STROKING TIME	Min.	/	Max.
OPENING TIME sec.	-	/	-
CLOSING TIME sec.	-	/	-
AIR FAILURE	CLOSE		
ELECTRIC FAILURE	-		




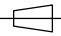
2. PNEUMATIC ACTUATOR METSO B1JU10/40CL
4. LIMIT SWITCH METSO QN44KO5HDM

Tubing: inch, AISI316L

Fittings: Swagelok, AISI316

CUSTOMER ORDER: OAO Slavneft-JANOS/SLAVNEFT OAO

SALES UNIT REF. : 0070300467\_05

	INSTRUMENTATION DRAWING	PVM DATE 07.04.15	PIIRT. DWN FK	TARK. CHECK. AW	HYV. APPR. FK
	Metso Automation	HELSINKI FINLAND		ENT. OLD NO.	UUSI NEW NO.
TAG-No.: U-XV55016, 55026, 55036, 55046, 55056, 55066			<div>D</div> <div>INS0001327684_005</div>		
			<div>MICROFILM.</div> <div>MUUTOS ISSUE</div>		