

TAG - No. : LV 4405

Valve Style :

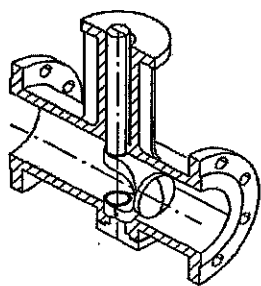
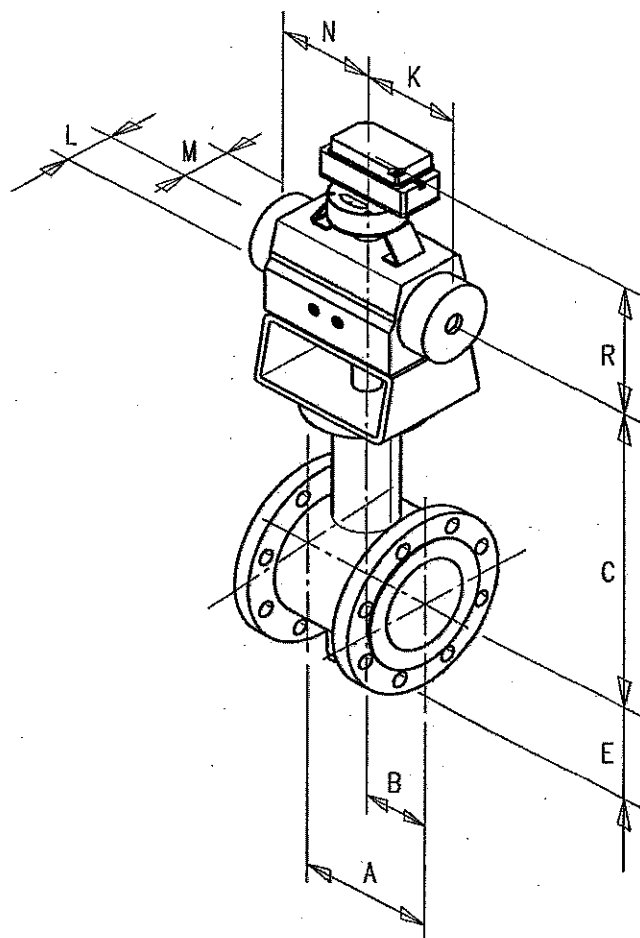
Process Fluid :

Upstream Conditions :

Body Size : [mm] DN 50

Press. Rating : [bar] PN 40

End Connections : Form EN 1092-1, F



A - FTO - FC Mounting A

Flange dimensions

Flange diameter : 165

Bolt circle diameter : 125

Bolt holes x diameter : 4 x 18

A	B	C	E	K	L	M	N	R		
124	62	344,5	87	172,5	88	63,5	172,5	408,5		

All dimensions in metric system (mm) and with reference to center lines

F 28-110

TAG - No. : LV 4403

Valve Style :

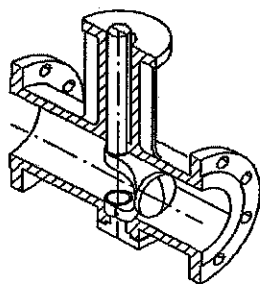
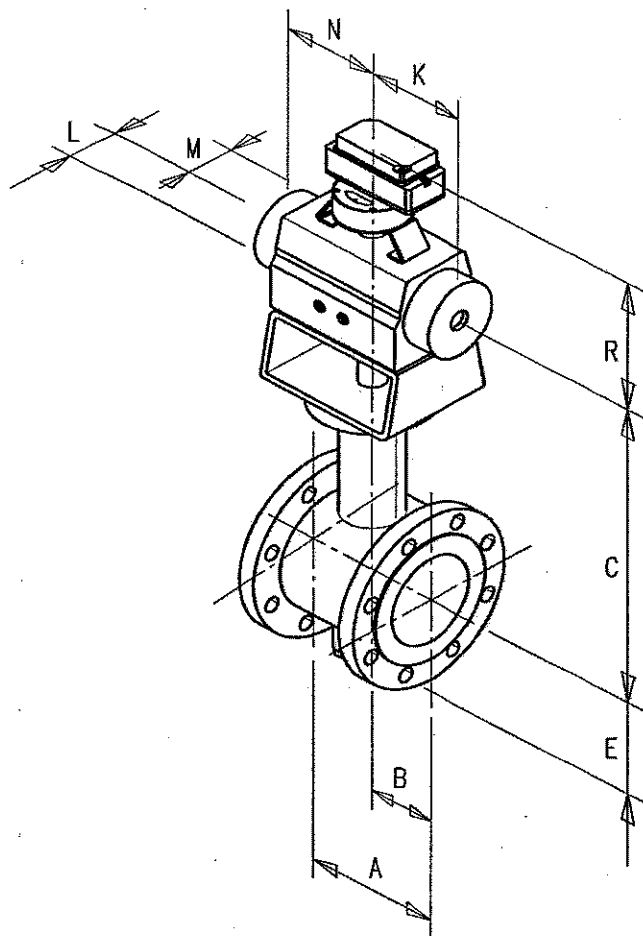
Process Fluid :

Upstream Conditions :

Body Size : [mm] DN 25

Press. Rating : [bar] PN 40

End Connections : Form EN 1092-1, F



A - FTO - FC Mounting A

Flange dimensions

Flange diameter : 115

Bolt circle diameter : 85

Bolt holes x diameter : 4 x 14

A	B	C	E	K	L	M	N	R		
102	51	318,5	58	157,5	81	60	157,5	402,5		

All dimensions in metric system (mm) and with reference to center lines

TAG - No. : FV 4302

Valve Style :

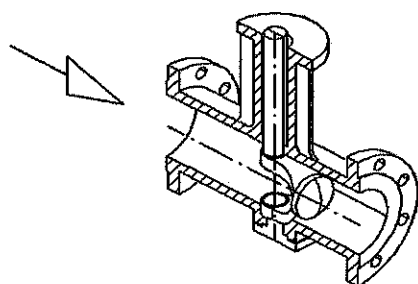
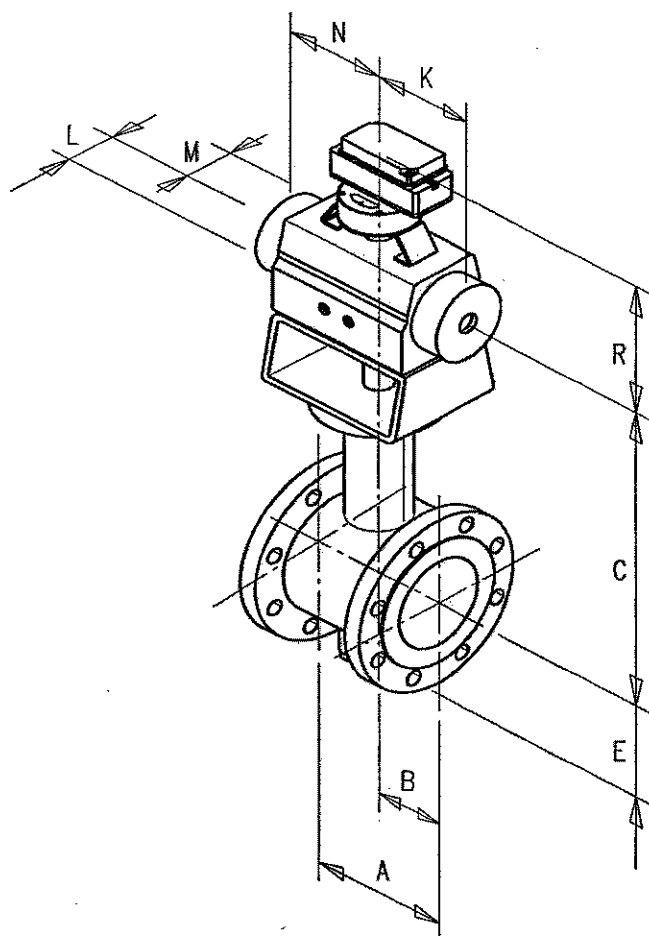
Process Fluid :

Upstream Conditions :

Body Size : [mm] DN 100

Press. Rating : [bar] PN 40

End Connections : Form EN 1092-1, F



A - FTC - FC

Mounting A

Flange dimensions

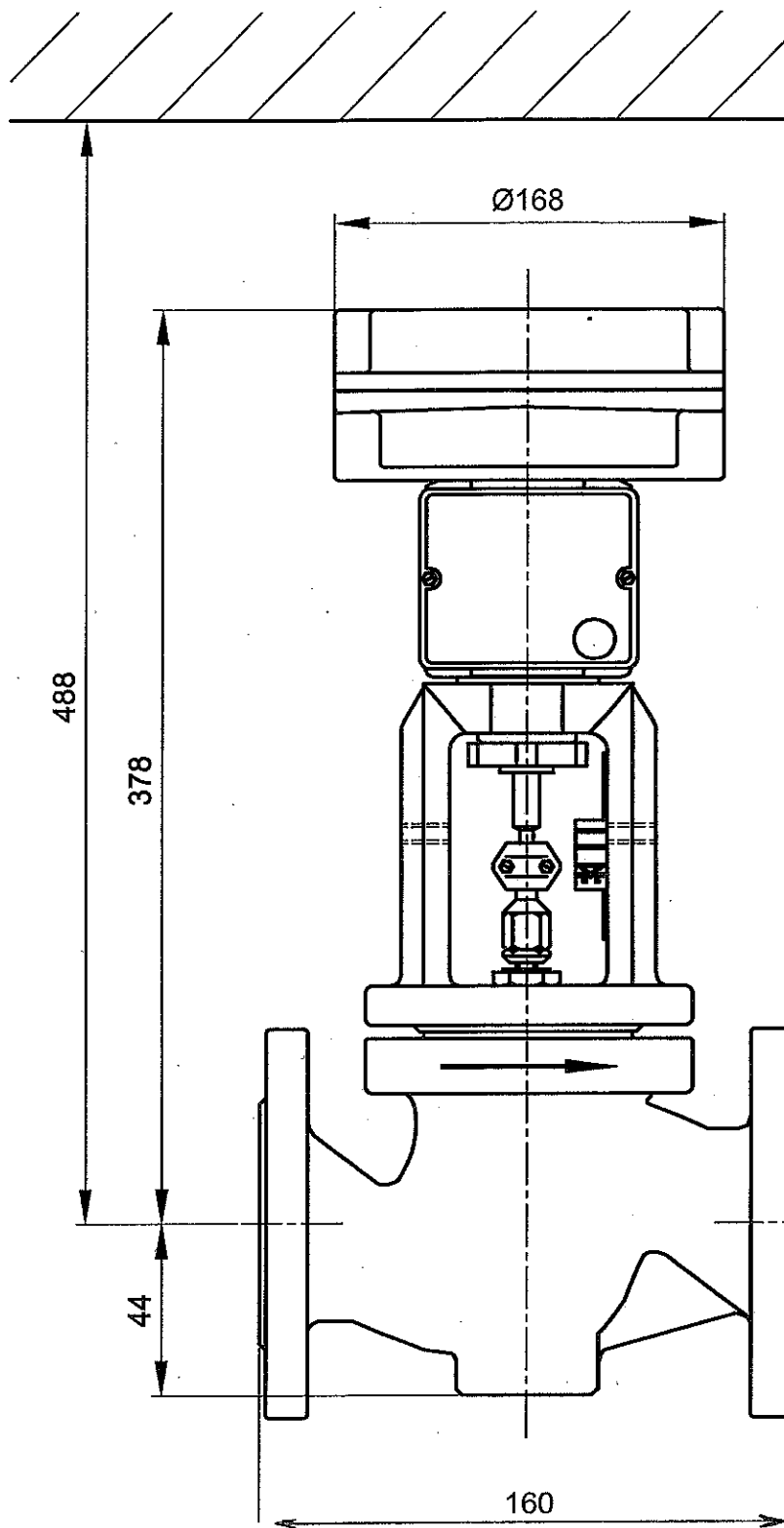
Flange diameter : 235

Bolt circle diameter : 190

Bolt holes x diameter : 8 x 22

A	B	C	E	K	L	M	N	R		
194	97	445,3	140	243,5	115	89	243,5	450,3		

All dimensions in metric system (mm) and with reference to center lines



TUV 2114

TUV 3114

TUV 4118